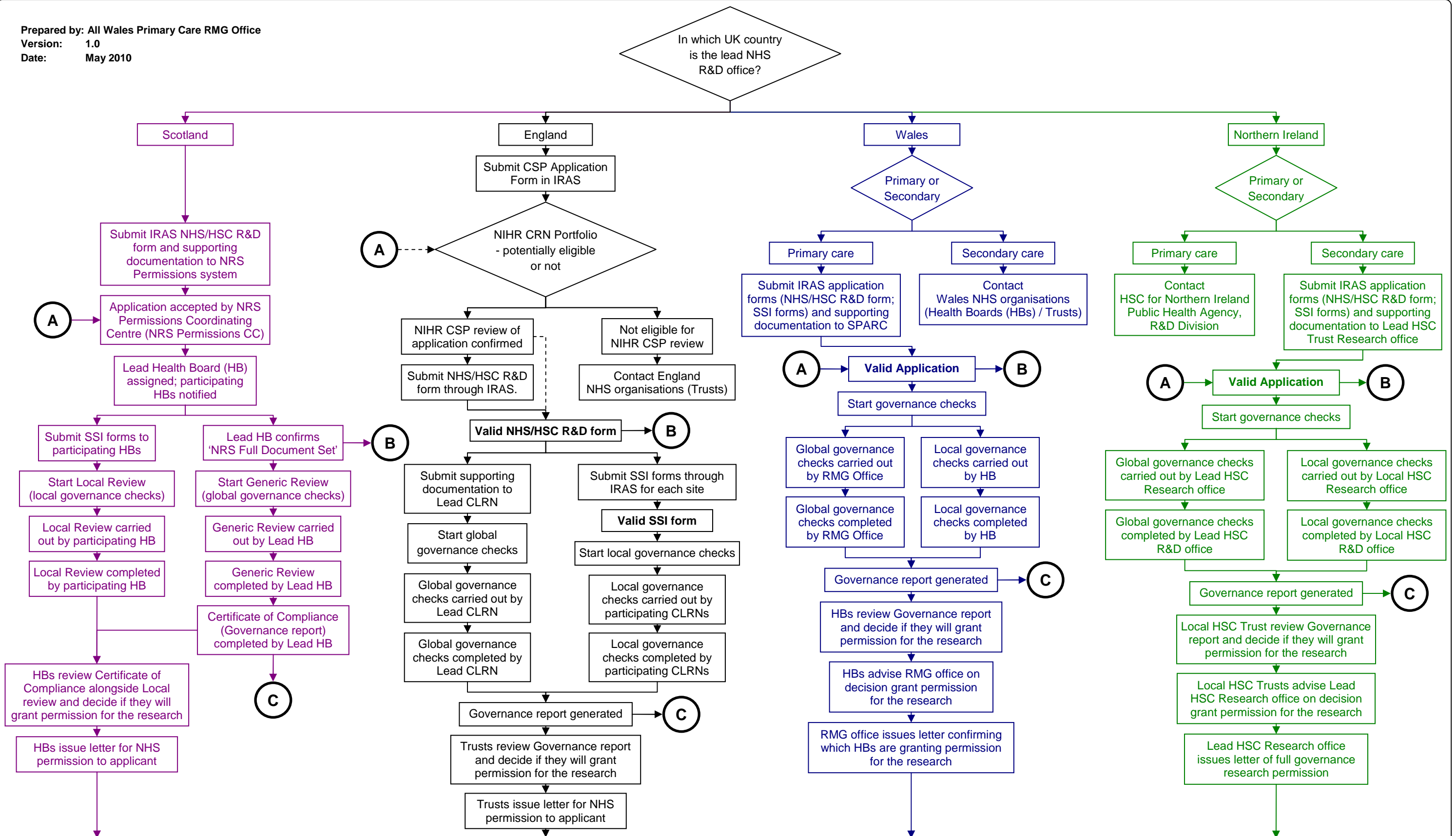


# UK Wide NHS Permissions for Research Flowchart

NB: Flowchart terminology is as used in national documentation

Prepared by: All Wales Primary Care RMG Office  
Version: 1.0  
Date: May 2010



**RESEARCH MAY COMMENCE AT SITES THAT HAVE BEEN GRANTED NHS/HSC PERMISSION FOR RESEARCH**

**A Application received from other UK nation**

- England – NHS/HSC R&D form plus IRAS xml file.
- Other UK nations – NHS/HSC R&D form, IRAS xml file plus supporting documentation.

**B Application transferred to other UK nation**

- England – NHS/HSC R&D form plus IRAS xml file.
- Other UK nations – NHS/HSC R&D form, IRAS xml file plus supporting documentation.

**C Global governance check information transferred to other UK nation**

- England – Global governance check report plus supporting documentation.
- Other UK nations – Global governance check report