



GIG
CYMRU
NHS
WALES | Iechyd Cyhoeddus
Cymru
Public Health
Wales

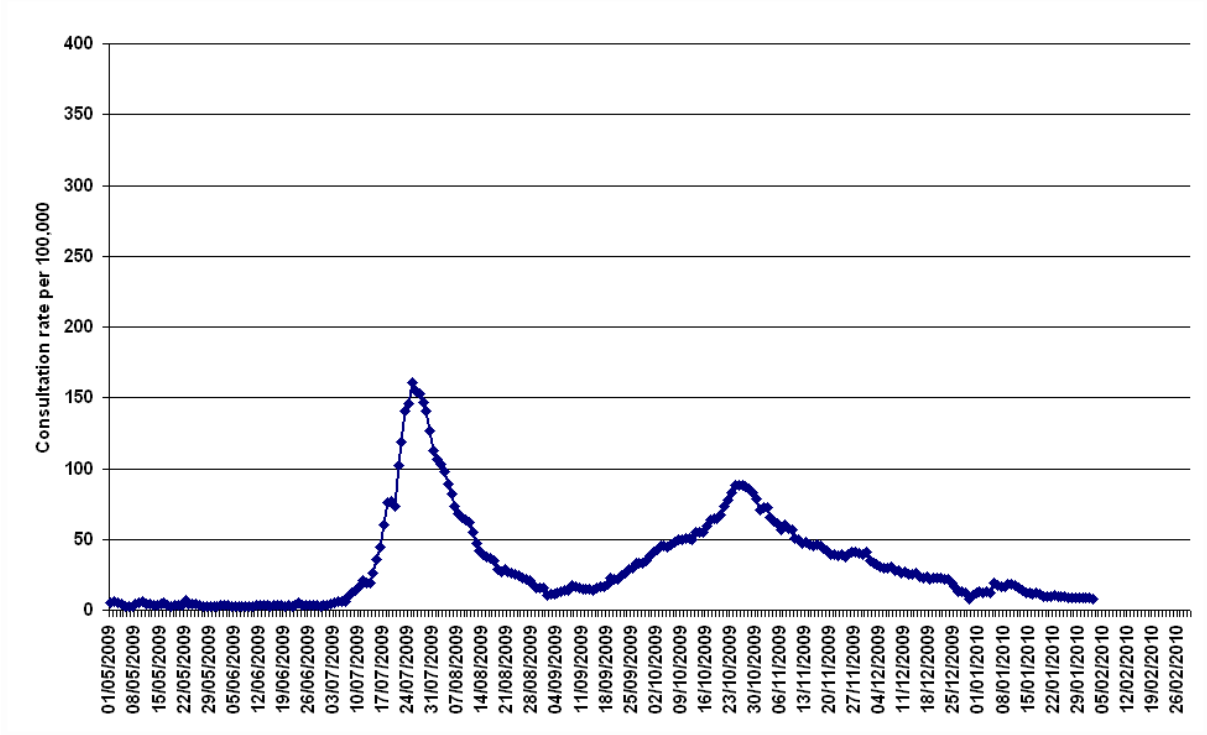


Llywodraeth Cynulliad Cymru
Welsh Assembly Government

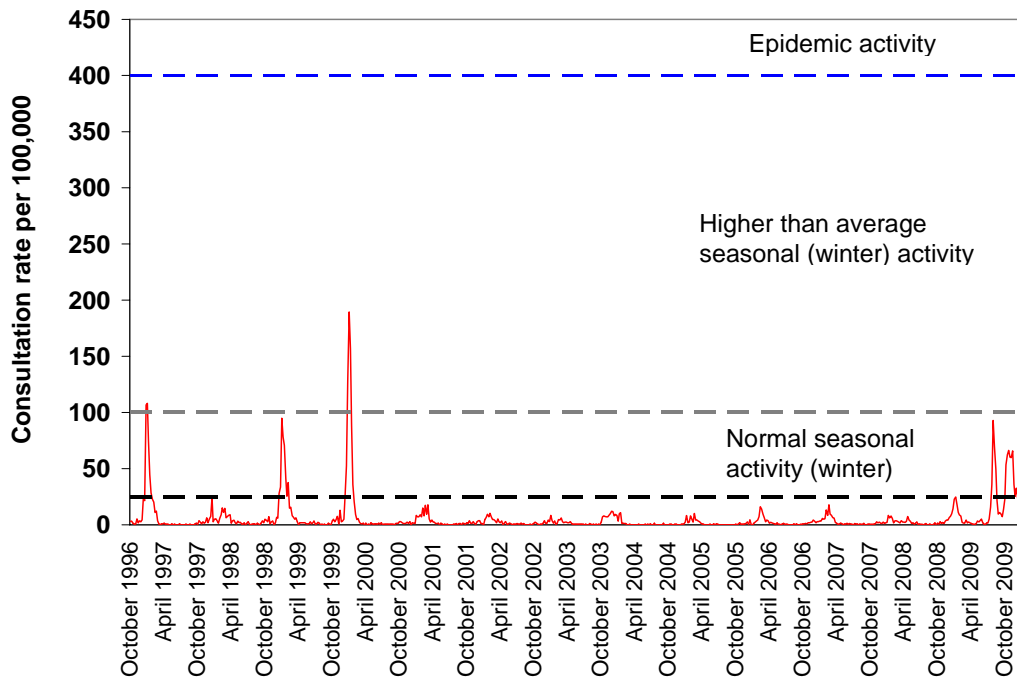
Swine Flu Pandemic Weekly Report Thursday 4 February 2010

Key points:

- The clinical consultation rate for influenza – not necessarily swine flu – in Wales during the week ending 31 January fell to 3.5 cases of flu-like illness diagnosed by GPs out of every 100,000 people in Wales. It was 4.8 per 100,000 in the previous week. Current levels of flu in Wales are below the usual level for this time of year.
- According to the latest data available from the [Public Health Wales daily GP surveillance scheme](#), as at 2 February, the influenza consultation rate in Wales as a whole was 8.2 cases of flu-like illness diagnosed by GPs in the previous seven days out of every 100,000 people in Wales. This is the equivalent of 246 people contacting their GPs in the last seven days with flu-like symptoms.
- As at noon on 3 February, 658 laboratory confirmed cases of swine flu have been reported by Public Health Wales Health Protection Teams in Wales since the start of the outbreak. No new cases have been reported in the past week.
- A total of 446 people with laboratory confirmed swine flu in Wales have been admitted to hospital since the start of the outbreak. No new admissions have been reported in the past week.
- As at 27 January, the total number of swine flu-related deaths in Wales is 28, with no deaths reported in the past week.
- Latest figures show that the percentage of total calls to NHS Direct Wales which were flu-related decreased to 14.5 per cent from 15.3 per cent in the previous week.
- The figure below shows the daily consultation rate of influenza across Wales since 1 May 2009 using the Audit+ system.



- The figure below shows the weekly influenza consultation rate in Wales (per 100,000 practice population per week), from October 1996 [using the weekly GP sentinel report].



The full Public Health Wales Weekly Influenza Surveillance Report for week 4 of 2010 (week ending 31 January) is available to view [online](#).

Comment from the Chief Medical Officer for Wales, Dr Tony Jewell:

“Our programme of vaccinating young children against swine flu is well under way.

“Vaccination remains the best protection for young children against the virus. The vaccine will continue to provide immunity for several years during which time the H1N1 virus is likely to still be circulating. Millions of doses have been given to young children across Europe and worldwide and it has been shown to be safe and effective

“The Welsh Assembly Government has produced a leaflet about vaccinating children against swine flu, and the vaccine your child will be given. You can read it on the Government website www.wales.gov.uk or ask your GP for a copy.”

Comment from Dr Roland Salmon, Director of the Communicable Disease Surveillance Centre, Public Health Wales:

“Swine flu appears to be petering out with evidence showing only limited circulation in some parts of Wales.

“In the last week, there have been no new laboratory confirmed cases identified. Our surveillance schemes show that levels of flu like illness are falling. The number of people contacting their GP with flu symptoms across Wales as a whole is at a lower level than we would expect to see in a normal flu season at this time of year.

“Nevertheless, I still strongly advise people to be aware of the symptoms of swine flu and of the steps that can be taken to prevent its spread.

“The vaccination programme is still being taken forward. Vaccination is the most effective tool we have in preventing swine flu now or if swine flu were to return later in the year. So I urge people identified as being at risk and parents of young children to look out for their invitation to be vaccinated.

“People with flu-like symptoms should stay at home, observe good respiratory and hand hygiene and stay away from GP surgeries, Accident and

Emergency departments and pharmacies unless advised to attend, which will also help to limit the infection's spread.

“People with flu like symptoms should check their symptoms on the NHS Wales Direct website or by calling the Swine Flu Information Line on 0800 1 513 513.

“Most people will get better at home with rest, plenty of fluids, and medication such as paracetamol. Antiviral medications are available for individuals who are at particular risk from flu, or for people who become very ill.

“If symptoms worsen or people have underlying health problems they should call their GP. Most people make a full recovery from swine flu without needing to call a doctor or to be admitted to hospital. However, a few people go on to develop complications and, as the pandemic continues, we are seeing deaths from swine flu in Wales, just as we do most years from seasonal flu.”

Further information on pandemic flu in Wales:

Public health advice and messages:

[Guidance for people with flu-like symptoms from Public Health Wales](#)

[Swine flu guidance from the Welsh Assembly Government](#)

Frequently asked questions:

[Swine flu factsheet from the Welsh Assembly Government](#)

Swine flu surveillance:

[Information on Public Health Wales flu surveillance](#)

Swine flu vaccination:

[Vaccination information from the Welsh Assembly Government](#)

Swine flu and pregnancy:

[Guidance for pregnant women from the Welsh Assembly Government](#)

Facemasks:

[Guidance on the use of facemasks from Public Health Wales](#)

Guidance for health professionals:

[Resources for health professionals from Public Health Wales](#)

Travel advice:

[Links to useful guidance for travellers](#)

Contacts for the Media:

Welsh Assembly Government Press Office on 02920 898100 (24 hours)

Public Health Wales Communications Team on 01443 824166 (24 hours)

Note: From Monday 1 February, the National Public Health Service for Wales (NPHS) name has been replaced with Public Health Wales, the name of the NHS Trust established on 1 October 2010.